

# Game title: Can't see the Forest for the Trees

## Components:

1. Starting point stake (painted red)
2. 10 stakes with attached tree identification part(s).
3. Compass, supplied by patrol, or compass, supplied by game staff (deduct 20 points)
4. Pencil, supplied by patrol, or pencil, supplied by game staff (deduct 5 points)
5. A sheet with 5 steps giving direction and a place to note the tree name See example below:

### Navigation Sheet

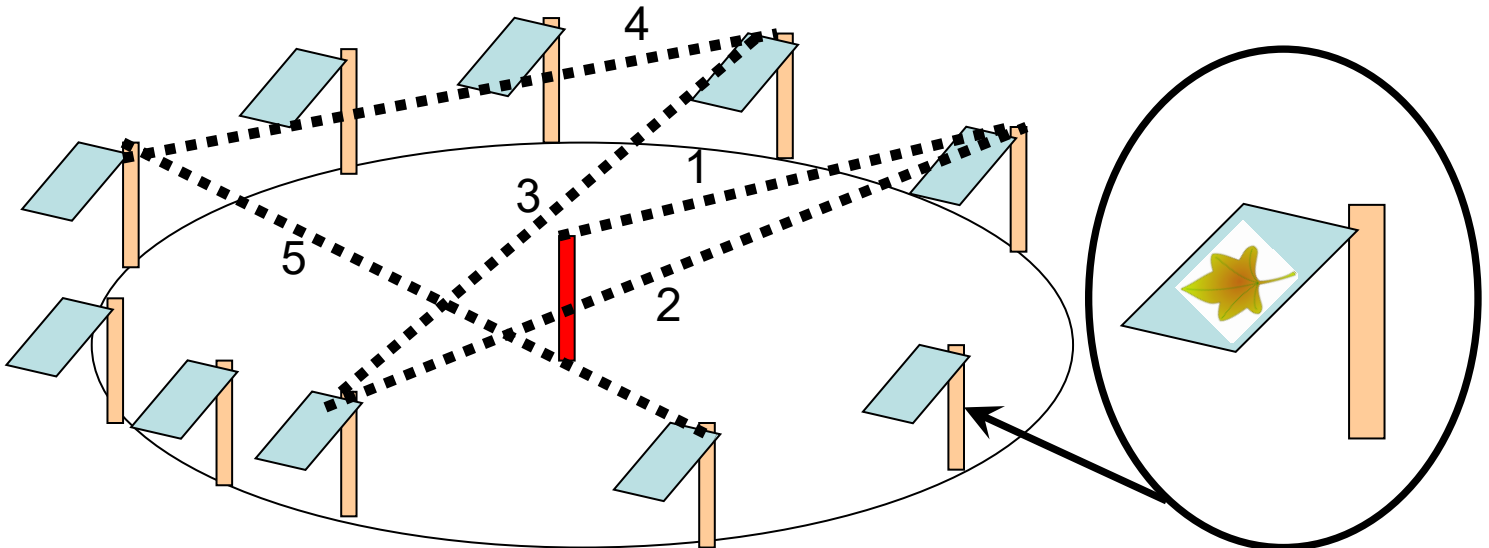
Step	Direction	Print Tree name here	Points earned
1	72 Degrees		
2	240 Degrees		
3	50 Degrees		
4	260 Degrees		
5	120 Degrees		

## Game Staff Setup:

Arrange 10 stakes in a circle, each 10 feet from the center starting stake. Use the following table to locate the stakes from the center stake. Note: a template (2 foot circular board with a center hole for the center stake and nails or screws on the edge at each coordinate will be useful and insure accuracy between all game sites (circles).

Stake #1	20 Degrees
Stake #2	45 Degrees
Stake #3	72 Degrees
Stake #4	125 Degrees
Stake #5	165 Degrees
Stake #6	210 Degrees
Stake #7	245 Degrees
Stake #8	275 Degrees
Stake #9	310 Degrees
Stake #10	335 Degrees

Example layout and path (note – not all stakes are on the path). Naming the trees on the path could sum up to 50 points, or less than 50 points and bonus points given to a patrol that identifies all trees including those not on the path.



## Participant Instructions:

When navigating through the forest it is important that you are going in the right direction and have knowledge of your surroundings. A good pioneer knows his or her path and can identify the forest trees. From the starting point, using the supplied sheet, navigate in sequence each of the noted steps. Change steps when your path crosses a stake. At each crossed stake observe the attached tree part, identify the tree and note its common name on the provided navigation sheet. Only identify trees whose stake lies in your path.

An alternative would be to have a start line about 5 feet outside the circle and all patrol members stand outside the line and one member does the first step and records the first tree identification. Then the second member picks up at the stake where the first stopped and does step #2. Other members follow suit until all 5 trees are identified. This insures participation by all patrol members.