

To All SWC Patrols,

It has been requested by the Woodruff Camp Ranger that no nails, screws or staples be put into any wood on any pavilion at any campsite. Leave No Trace!

If your patrol plans to wrap your campsite pavilion with a tarp you should bring 2x2 timbers, or equivalent, and using rope, large plastic “zip” ties or ratcheting straps secure the timbers to the outside of the pavilion posts. Then attach your tarps to the 2x2 timbers using whatever means you desire; screws, nails, staples, etc. When SWC is over remove your 2x2’s (and save for next year).

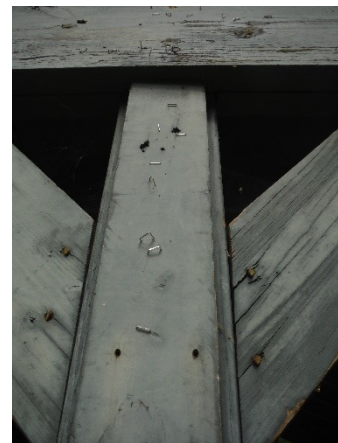
Some pavilions have screws, staples, nails etc. from previous years still in their posts. Do a good turn for Woodruff and please remove these items from the pavilion posts before installing 2x2’s and tarps.

Large (24”) plastic “zip” ties are available at Harbor Freight Tools in a 10-pack for \$1.69. Most pavilions have 10 posts (eight posts 8’ tall and two posts 11’ tall). Types #2 & #3 pavilion may need additional 2x2’s for horizontal beams on the gable ends.

I would recommend no less than 8 “zip” ties per post. Two end to end around the 2x2 and post in four places.



Examples of screws and staples in campsite pavilions.
Please remove these before installing 2x2’s



For your information these are the 3 types of pavilions at Woodruff and the campsites where they are located.



Three styles of Pavilion at Woodruff
#1 is most common and there are one each at sites 1 , 3 thru 10, & 12.

#2 has two at site 2, one at 10, one at 11 and one at sites 13 – 22

There is only one #3 (at site 11) in addition to the type #2 also there.

Sites 2, 10 and 11 are the only sites with two pavilions